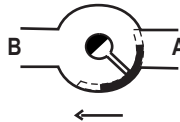


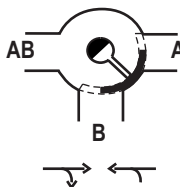
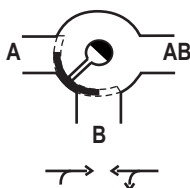


**TYPE SUMMARY**

Type	Dia mm	K <sub>UF</sub> m³/h
_S 25	25	10
_SL 25	25	6



2WAY VALVE



3WAY VALVE

Mixing application

(2 inlet, 1 outlet)

Diverting application

(1 inlet, 2 outlets)

**FEATURES**

- S.G. Iron construction
- Simple, rugged construction
- Direct connection to rotary actuator
- Available in 2way (2S) or 3way (3S) Configuration
- 3way valves Suitable for diverting (1 inlet, 2 outlets) or mixing (2 inlets, 1 outlet) application
- Connection size 25mm - standard & low Kv (SL)

**BENEFITS**

- Easy operation
- Highly reliable
- Long life
- Economical
- Easy maintenance

**TECHNICAL DATA**

Material

Valve body	:	S.G. Iron
Slipper	:	Brass
Spindle	:	Stainless steel
Spindle packing	:	O-ring (nitrile)
Nominal pressure	:	PN16
Max. admissible pressure differential	:	60 kPa (0.6 bar)
Mounting position	:	Horizontal or vertical (Do not mount with spindle downwards)
Water temperature	:	2°C to 110° C
Angle of rotation	:	90°

## INSTALLATION AND COMMISSIONING

Ensure that the position and rotation of the slipper complies with the hydraulic circuit of the installation.

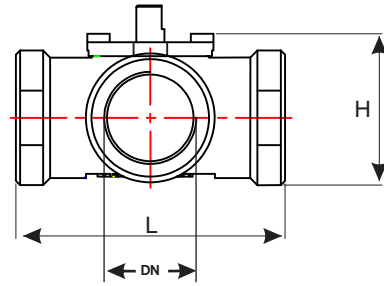
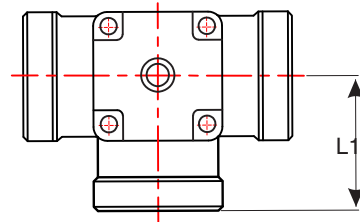
## DIMENSIONS

With screwed connections:

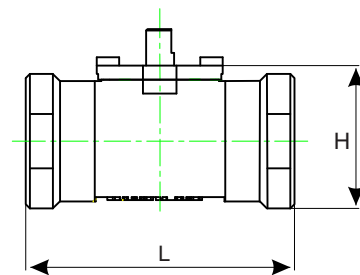
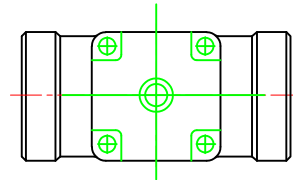
DN	Connection	L	L1	H	Wt.(Kgs)
25	1" BSP	96	48	52	1

### NOTES:

- Dimensions in mm and weight in kgs including packaging (without actuator)
- L1\*: Dimension for 3way valves only.



3way valve



2way valve