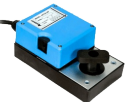


PRICE LIST - IIIA

Control Valves for AHU'S Modulating Control, PN10

Effective from 1st April, 2024

S. No	DESCRIPTION	MODEL	PRICE (Rs. each)
1.	2/3 way Control Valve (CI Body) with linkage Set, PN10		
	• 20mm	3S-20	2,950.00
	• 25mm	3S-25	2,950.00
	• 32mm	3S-32	3,950.00
	• 40mm	2S-40	3,300.00
	• 40mm	3S-40	4,350.00
	• 50mm	2S-50	4,850.00
	• 50mm	3S-50	6,000.00
	• 65mm	2F-65	8,200.00
	• 65mm	3F-65	10,500.00
	• 80mm	2F-80	12,200.00
	• 80mm	3F-80	14,800.00
	• 100mm	2F-100	15,500.00
	• 100mm	3F-100	19,200.00
	• 125mm	2F-125	18,500.00
	• 125mm	3F-125	24100.00
2.	Rotary Actuators modulating for Control Valves 24Vac/dc, 0-10Vdc input, 2-10Vdc feedback, Form Fit		
	• 5Nm for (20mm, 25mm, 32mm)	ARM-05-24F.V	3,500.00
	• 10Nm for (40mm, 50mm)	ARM-10-24F.V	4,400.00
	• 20Nm for (65mm, 80mm, 100mm, 125mm)	ARM-20-24F.V	5,200.00
3.	Microprocessor Based Controller with LCD display, 24vac, range 15°C-35°C, 0-10Vdc output.	C-2A-T1-V-X	2,600.00
	OR		
	Microprocessor Based Controller with LCD display, 24vac, range 15°C-35°C, 0-10Vdc output & external sensor	C-2A-T1-V-E1	2,800.00
	• Extra for Temp. Sensor Bulb Type with Cable Gland	S-X-B4-T1.G	510.00
4.	Microprocessor Based Controller with LCD display, 24vac, range 15°C-35°C, 2-10 Vdc Input (BMS), 0-10Vdc output.	C-2A-T1-V-B	2,900.00
5.	Power Supply 230Vac input, 24Vac output, 300mA (1 no. required per controller)	P-16-2-3	600.00
	<p>NOTE: Controller Model C-2A-T1-VB can modulate our valve independently through temp. sensor provided. If the BMS is available it can accept 2-10Vdc signal from BMS and can operate the valve according to BMS signal, whenever BMS signal fails it reverts back to independent operation.</p>		
	<p>GST extra, as applicable. for other Terms & Conditions, please refer : http://anergy.in/Commercial/Terms_Conditions.pdf</p>		



I N T H E S E R V I C E O F T H E B U I L T E N V I R O N M E N T

Anergy Instruments Pvt. Ltd.

40, Sector 27A
Faridabad - 121 003
India.

Tel : +91 129 4045901
87500 55209

Email : info@anergy.in
Web : www.anergy.in