



TEMPERATURE DATA LOGGER



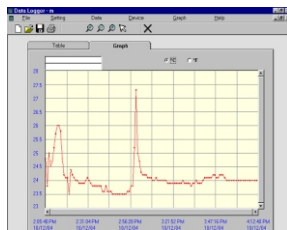
TEMPERATURE & RH DATA LOGGER



PC INTERFACE CABLE

S. No.	Date	Time	Temperature	Humidity
1	08/12/2008	2:07:40 PM	24.2	°C
2	08/12/2008	2:08:40 PM	23.8	°C
3	08/12/2008	2:09:40 PM	25	°C
4	08/12/2008	2:10:40 PM	24.5	°C
5	08/12/2008	2:11:40 PM	24.7	°C
6	08/12/2008	2:12:40 PM	25.2	°C
7	08/12/2008	2:13:40 PM	25.7	°C
8	08/12/2008	2:14:40 PM	26	°C
9	08/12/2008	2:15:40 PM	26	°C
10	08/12/2008	2:16:40 PM	26.2	°C
11	08/12/2008	2:17:40 PM	24.2	°C
12	08/12/2008	2:18:40 PM	24.1	°C
13	08/12/2008	2:19:40 PM	24.1	°C
14	08/12/2008	2:20:40 PM	24.1	°C
15	08/12/2008	2:21:40 PM	23.5	°C

DATA TABLE



GRAPHICAL DATA

## FEATURES

- Wide range - temperature, RH, voltage, event
- Small size, portable, low cost
- On-line and Off-line modes of operation
- Built-in clock
- Stand-alone, long operational life
- Re-usable device, replaceable battery
- Programmable start/stop time and recording interval
- Non-volatile solid state memory up to 16 K sample point storage capacity
- Easy and instant connection to PC with interface for programming and data download
- Easy to set up windows based software package
- Analysis of data in tabular and graphical format and export to spreadsheet/ word processing programs
- Zoom in facility
- Log, store, retrieve, share, transfer and print data.

## BENEFITS

- Rugged, maintenance free, long life
- User friendly, easy to program
- Data retention even in case of battery failure/replacement
- Easy data sharing and transfer
- Simplified record keeping
- Replaces cumbersome and costly strip-chart recorders

## TECHNICAL DATA

Housing material	:	PP / ABS
Size	:	5.5 x 3.5 x 1.8 cms
Weight	:	30 gms
Temperature	:	-30 to + 70° C with $\pm 1^\circ$ C accuracy (respective figures for °F)
Relative Humidity	:	0-100% with $\pm 3\%$ accuracy
Voltage	:	0-10 V DC from a transmitter
Event	:	Pulse width of 100 microseconds or more
Battery	:	3 V lithium button cell (CR2430)
PC requirements	H/w	Minimum P II or equivalent processor with 32 MB RAM and 64 MB free disk space. One free USB port
	O/s	Windows 98 upwards
Sample rate/interval	:	Adjustable between 2 seconds to 24 hours
Maximum no. of readings	:	16 K
Maximum memory size	:	32 K
Resolution	:	10 bit